

## REC: CardioClinics

[www.reccardioclinics.org](http://www.reccardioclinics.org)

## Original article

Sacubitril/valsartan reduces levels of procollagen types I and III and correlates with reverse cardiac remodeling<sup>☆</sup>

Carlos A. Plata-Mosquera<sup>a,b,c,d,\*</sup>, Wikler Bernal-Tórres<sup>c</sup>,  
 Álvaro A. Herrera-Escandón<sup>a,b,c,d</sup>, Laura P. Uribe-Posso<sup>a,b,c</sup>,  
 Ángela M. Rodríguez-Casanova<sup>a</sup>, María E. Casanova-Valderrama<sup>c</sup>,  
 Marcela Vivas-Mayor<sup>a,b</sup>, Anyi C. Puerta-Mesa<sup>a,b</sup>, Jazmín Martínez-Aristizabal<sup>e</sup>

<sup>a</sup> Departamento de Cardiología, DIME Clínica Neurocardiovascular, Cali, Colombia

<sup>b</sup> Unidad de Insuficiencia Cardíaca y Trasplante Cardíaco, DIME Clínica Neurocardiovascular, Cali, Colombia

<sup>c</sup> Departamento de Medicina Interna, Universidad Libre, Cali, Colombia

<sup>d</sup> Departamento de Medicina Interna, Universidad del Valle, Cali, Colombia

<sup>e</sup> Servicio de Rehabilitación Cardíaca, DIME Clínica Neurocardiovascular, Cali, Colombia

## ARTICLE INFO

## Article history:

Received 14 April 2020

Accepted 24 June 2020

Available online 3 August 2020

## Keywords:

Heart failure

Cardiac remodeling

Extracellular matrix

Sacubitril/valsartan

## ABSTRACT

**Introduction and objectives:** Extracellular matrix turnover is a major determinant of cardiac remodeling in heart failure. Sacubitril/valsartan decreases serum levels of procollagen type I amino-terminal peptide (PINP) and procollagen type III amino-terminal peptide (PIIINP), but its correlation with reverse remodeling is unknown. The purpose of this study is to determine the effect of sacubitril/valsartan on the profibrotic PINP and PIIINP biomarkers and their association with reverse cardiac remodeling in patients with heart failure with reduced ejection fraction (HFrEF).

**Methods:** Prospective, single-center, open-label study of 401 outpatients with HFrEF initiated with sacubitril/valsartan treatment according to Guideline-Directed Medical Therapy. Change in serum levels of PINP, PIIINP, left ventricle end-diastolic volume index, left ventricle end-systolic volume index and left ventricle ejection fraction were analyzed from baseline to 12-month follow-up.

**Results:** Baseline levels of PINP and PIIINP were highest (above-median) in 63 patients with ischemic cardiomyopathy and 19 with idiopathic dilated cardiomyopathy, decreasing  $-36 \mu\text{g/L}$  for PINP (95%CI, 78–93;  $P < 0.001$ ), and  $-3.0 \mu\text{g/L}$  for PIIINP (95%CI, 73–91;  $P < .001$ ), at 12 months with sacubitril/valsartan therapy. These changes were correlated with an improvement in left ventricle ejection fraction from 29% to 36%, and a reduction in left ventricle end-diastolic ( $-20 \text{ mL/m}^2$ ) and end-systolic ( $-18 \text{ mL/m}^2$ ) volumes in this subgroup ( $P < .001$ ). Advanced age, diabetes, hypertension, and greater dilation of left ventricle were more frequent in this subgroup ( $P < .001$ ).

<sup>☆</sup> Abbreviations: ECM, extracellular matrix; HF, heart failure; HFrEF, heart failure with reduced ejection fraction; LVEF, left ventricular ejection fraction; PINP, procollagen type I amino-terminal peptide; PIIINP, procollagen type III amino-terminal peptide.

\* Corresponding author.

E-mail address: [cplata1@gmail.com](mailto:cplata1@gmail.com) (C.A. Plata-Mosquera).

<https://doi.org/10.1016/j.rccl.2020.06.002>

2605-1532/© 2020 Sociedad Española de Cardiología. Published by Elsevier España, S.L.U. All rights reserved.

**Conclusions:** These findings suggest that changes in fibrosis markers induced by sacubitril-valsartan therapy in HFrEF are related to reverse cardiac remodeling in patients with higher PINP and PIIINP levels.

© 2020 Sociedad Española de Cardiología. Published by Elsevier España, S.L.U. All rights reserved.

## Sacubitrilo-valsartán reduce el procolágeno tipos I y III y se correlaciona con el remodelado cardiaco reverso

### R E S U M E N

#### Palabras clave:

Insuficiencia cardiaca  
Remodelado cardiaco  
Matriz extracelular  
Sacubitrilo-valsartán

**Introducción y objetivos:** El recambio de la matriz extracelular es determinante en el proceso de remodelado cardiaco. Sacubitrilo-valsartán disminuye el péptido aminoterminal del procolágeno tipo I (PINP) y tipo III (PIIINP), pero se desconoce su correlación con el remodelado reverso. El objetivo es determinar el efecto del sacubitrilo-valsartán sobre los biomarcadores PINP y PIIINP, y su asociación con el remodelado reverso en pacientes con insuficiencia cardiaca con fracción de eyección reducida (ICFER).

**Métodos:** Estudio prospectivo de 401 pacientes con ICFER tratados con sacubitrilo-valsartán, de acuerdo a las guías de práctica clínica. Se analizaron los cambios en PINP, PIIINP, fracción de eyección y volúmenes indexados de fin de diástole y fin de sístole del ventrículo izquierdo al inicio y a los 12 meses de seguimiento.

**Resultados:** Los niveles basales de PINP y PIIINP fueron más altos (por encima de la media) en 63 pacientes con miocardiopatía isquémica y 19 con miocardiopatía dilatada idiopática, disminuyendo  $-36 \mu\text{g/l}$  para PINP (IC95%, 78-93;  $p < 0,001$ ) y  $-3,0 \mu\text{g/l}$  para PIIINP (IC95%, 73-91;  $p < 0,001$ ), a los 12 meses de tratamiento con sacubitrilo-valsartán. Estos cambios se correlacionaron con aumento en la fracción de eyección del ventrículo izquierdo del 29 al 36% y reducción en los volúmenes de fin de diástole ( $-20 \text{ ml/m}^2$ ) y fin de sístole ( $-18 \text{ ml/m}^2$ ). La edad avanzada, la diabetes, la hipertensión y la mayor dilatación del ventrículo izquierdo fueron más frecuentes en este subgrupo ( $p < 0,001$ ).

**Conclusiones:** Los cambios en los biomarcadores inducidos por sacubitrilo-valsartán en ICFER se correlacionan con el remodelado reverso en pacientes con niveles más altos de PINP y PIIINP.

© 2020 Sociedad Española de Cardiología. Publicado por Elsevier España, S.L.U. Todos los derechos reservados.

## Introduction

Cardiac remodeling is an essential process in the progression of heart failure (HF). Remodeling is defined as any changes to cardiac chamber geometry and function and may occur in response to sustained physiological or pathophysiological stimuli such as cardiac injury, hemodynamic changes, inflammation and neurohormonal activation. Although it is initially adaptive in the short-term, in the long-term it increases cardiac work, promotes hypertrophy, activates fibroblasts, and contributes to the development of myocardial fibrosis. The concept of cardiac remodeling was initially developed to describe changes, which occur in the days and months following myocardial infarction, but it has been extended to cardiomyopathies of non-ischemic origin, such as idiopathic dilated cardiomyopathy or hypertensive cardiomyopathy, suggesting common mechanism for the progression of cardiac dysfunction.<sup>1-5</sup> During remodeling in HF with reduced ejection fraction (HFrEF), the left ventricle manifests as gradual increases in end-diastolic and end-systolic volumes, wall thinning, and a change in chamber geometry from an ellip-

soidal shape to a more spherical, less elongated shape. These processes are associated with worsening systolic or diastolic functions and are accompanied by changes in extracellular matrix (ECM). Such changes are termed remodeling, whereas reverse remodeling occurs when left ventricle geometry and/or function reverts closer to that of normal heart structure and is associated with improved cardiac function and better prognosis.<sup>6-10</sup>

Reverse remodeling usually occurs in the context of intensification and titration of drug and device therapy, but the magnitude of left ventricle recovery is far from consistent across patients. This is partly determined by specific factors related to the cause and duration of HF. Advanced age, ischemic causes, presence of left bundle branch block, diagnosis of HF dating from  $> 12$  months, higher concentrations of cardiac biomarkers, and lack of guideline-directed HF therapy are associated with adverse remodeling. Interestingly, although lower left ventricle ejection fraction (LVEF), larger left ventricle volumes, and higher levels of fibrosis markers are associated with worse prognosis (high hospital admissions, mortality, or the need for a heart transplant), studies

suggest that these patients may have greater propensity for reverse remodeling.<sup>11-14</sup> Identification of reliable predictors of reverse remodeling would enable cardiologists to adopt a more tailored approach in this high risk population.

The PARADIGM-HF (Prospective Comparison of Angiotensin Receptor-Nephrilysin Inhibitor With Angiotensin-Converting Enzyme Inhibitor to Determine Impact on Global Mortality and Morbidity in Heart Failure trial) provided a unique opportunity to examine a panel of biomarkers that reflect ECM homeostasis in a large cohort of 1776 well-characterized HFREF patients that included long-term outcome data. In the analysis, at baseline the profibrotic biomarkers procollagen type I amino-terminal peptide (PINP) and procollagen type III amino-terminal peptide (PIIINP), were higher than published referent control values. The higher the baseline of PINP ( $> 40 \mu\text{g/L}$ ), and PIIINP ( $> 6.0 \mu\text{g/L}$ ), the higher the subsequent rates of cardiovascular death and HF hospitalizations. Eight months after randomization sacubitril/valsartan significantly decreased these biomarkers compared with enalapril treatment ( $P < .05$ ). Although reduction in profibrotic biomarkers was strongly associated with outcomes, a link to reverse cardiac remodeling was not examined. In aggregate, these data suggest that one mechanism by which sacubitril/valsartan may exert a beneficial outcome in HFREF patients may be related to a reduction in profibrotic signaling.<sup>15</sup>

Recently, the PROVE-HF (Prospective Study of Biomarkers, Symptom Improvement, and Ventricular Remodeling During Sacubitril/Valsartan Therapy for Heart Failure), showed a weak reduction in N-terminal pro-B-type natriuretic peptide in 654 patients with HFREF treated with sacubitril/valsartan (from 816 pg/mL at baseline to 455 pg/mL at 12 months), and was associated with significant improvement in left ventricle volumes and LVEF by mechanisms that are not fully understood.<sup>16</sup> These findings suggest that the effects of sacubitril/valsartan on reverse cardiac remodeling in HFREF patients are not exclusively related to angiotensin receptor antagonism and neprilysin inhibition.

Since cardiac remodeling is an important aspect of disease progression, preventing or reversing maladaptive remodeling is an accepted therapeutic target. The purpose of this study is to determine the effect of sacubitril/valsartan on the profibrotic PINP and PIIINP biomarkers and their association with reverse cardiac remodeling in patients with HFREF.

## Methods

This is an observational, prospective, open-label, single-center study, of 401 outpatients with HFREF of ischemic or idiopathic etiology and history of New York Heart Association class II, III or IV initiated with sacubitril/valsartan treatment according to Guideline-Directed Medical Therapy of Heart Failure. The diagnosis of ischemic cardiomyopathy and idiopathic dilated cardiomyopathy was made according to a standardized definition for use in clinical research,<sup>17</sup> and World Health Organization criteria.<sup>18</sup> Reverse cardiac remodeling was defined as an absolute LVEF increase  $> 10\%$  and relative percent left ventricle end-diastolic volume reduction  $> 10\%$ .<sup>19</sup> To be eligible, they had to have been receiving for at least 2 weeks a fixed-dose drug regimen that could include

angiotensin-converting enzyme inhibitors or angiotensin receptor blockers, beta-blockers, mineralocorticoid receptor antagonists and diuretics, and were clinically stable. Enrollment commenced on January 31, 2017, and follow-up was completed on January 15, 2020. Patients with recent tricuspid pacemaker implantation ( $< 6$  months), hospitalization for HF ( $< 1$  month), or with other concomitant diseases such as liver cirrhosis, hyperthyroidism, pulmonary fibrosis, chronic kidney failure, cancer or autoimmune diseases, were excluded. This study was approved by the DIME Clínica Neurocardiovascular ethics committee and an informed, written consent was obtained of each patient. Following informed consent, angiotensin/converting enzyme inhibitors and angiotensin receptor blockers were discontinued, and patients were given sacubitril/valsartan according to the European Society of Cardiology guidelines for the diagnosis and treatment of acute and chronic heart failure.<sup>20</sup> Following angiotensin receptor antagonism and neprilysin inhibition initiation, patients returned for drug titration every 2 weeks, with a goal dose of sacubitril/valsartan of 97/103 mg twice daily or highest tolerated dose. The criteria for increasing the dose included a systolic blood pressure of 90 mmHg or higher while the patient was standing, the absence of symptoms of hypotension, and a serum creatinine concentration of less than 2.0 mg per deciliter or no more than 50 percent higher than the base-line concentration. Patients returned for follow-up visits at 2, 4, and 6 months and every 3 months thereafter. Treatment continued for at least to 12 months. Blood samples were obtained and 2-dimensional echocardiography was performed at baseline and at 12-month follow-up. Clinical data, cardiovascular risk factors (hypertension, diabetes mellitus), medication (dose, frequency), and ventricular parameters, were entered into a database.

Patients were included in the study if they fulfill the following criteria: a) Age  $> 18$  years. b) HF of ischemic or idiopathic etiology (New York Heart Association class II-IV). c) LVEF  $< 40\%$ . d) Last hospitalization due to HF ( $> 1$  month). e) Three-chamber pacemaker implantation ( $> 6$  months).

Patients were excluded from the study if they present any of the following conditions: a) Right HF due to chronic cor pulmonale. b) HF of other than ischemic or idiopathic etiology. c) Pregnancy. d) Chronic kidney failure (creatinine  $> 3$  mg/dL). e) Liver cirrhosis. f) Hyperthyroidism. g) Amyloidosis. h) Pulmonary fibrosis. i) Autoimmune diseases.

### Blood sample collection

Blood samples were collected from the antecubital region (venipuncture) on the day the patient was enrolled and at 12 months. Serum was stored at  $-70^\circ\text{C}$  until its analysis. Except for the first one, blood extractions were performed so as to coincide with scheduled controls, and therefore did not entail any additional intervention. All baseline and 12-month follow-up samples were analyzed at once. Using immunoassays from commercially available kits, we measured 2 ECM serum markers: PINP) and PIIINP.

### Determination of procollagen type I amino-terminal peptide (PINP)

A 350  $\mu$ L volume of each sample was put into sterile plastic microcentrifuge tubes. The serum was centrifuged at 1.300 rpm for 10 min at 4°C. The levels of PINP were determined using the Elecsys 2010 automatic analyzer (Roche Diagnostics, Switzerland). The “Elecsys total PINP” test was used by electrochemiluminescence immunoassay (ECLIA). The principle of the test is based on the use of a specific anti-PINP monoclonal biotinylated antibody and a ruthenium chelate-labeled anti-PINP monoclonal specific antibody, to which streptavidin-coated microparticles are incorporated, forming a complex between biotin and streptavidin. The mixture is transferred to a reading cell where, by magnetism, the microparticles are temporarily fixed to the surface of the electrode. The unfixed elements are subsequently removed by washing with the “ProCell” reagent. Applying a defined electric current produces a chemiluminescent reaction whose light emission is measured directly with a photomultiplier. The results are obtained by means of a calibration curve made in the system by reference to 2 points and a master curve included in the barcode of the reagent. The incubation time used to obtain a result was 18 minutes, with a measurement interval of 5–1.200  $\mu$ g/L. Concentrations above the detection limit can be diluted with a recommended dilution of 1:2. The intra-assay precision was 2.3% and the inter-assay 2.8%.<sup>21</sup>

### Determination of procollagen type III amino-terminal peptide (PIIINP)

A volume of 300  $\mu$ L of each sample was placed in sterile plastic microcentrifuge tubes. The serum was centrifuged at 1.300 rpm for 10 min at 4°C, the supernatant was isolated. Before the test, both the samples and the reagents were 30 min at room temperature. The levels of PIIINP were determined by means of a competitive radioimmunoassay using the UniQ PIIINP RIA kit, (Orion Diagnostics). The principle of the test is that a known amount of radiolabelled PIIINP ( $I^{125}$ ) and an unknown amount of PIIINP (without radioactive tracer) in the sample compete for the high-affinity binding sites of the antibody. After separating the free antigen, the amount of labeled PIIINP in the sample is inversely proportional to the amount of PIIINP contained in the serum. The results were obtained in terms of concentration ( $\mu$ g/L) from a log-logit representation of the calibration curve. The standard curve includes 7 polypropylene tubes with reconstituted human serum as calibrators: tube A (maximum junction) 0  $\mu$ g/L of PIIINP, tube B with 1.0  $\mu$ g/L, tube C with 2.5  $\mu$ g/L, tube D with 5.0  $\mu$ g/L, tube E with 10  $\mu$ g/L, tube F with 25  $\mu$ g/L and tube G with 50  $\mu$ g/L. The measurement range of the assay is 1.0–50  $\mu$ g/L. The mean intra-assay precision was 4.7% and the inter-assay 6.1%.<sup>21</sup>

### Echocardiography

A complete resting 2-dimensional (2D) echocardiogram and Doppler ultrasound examination, including all standard views, was performed with a 3.5-MHz transducer (Philips IE33 Ultrasound System, United States) at baseline and at 12 months. Ejection fraction was derived from left ventricle vol-

umes using the area-length method (modified Simpson's rule) in the apical 4- and 2-chamber views, as recommended by the American Society of Echocardiography and the European Association of Cardiovascular Imaging.<sup>22</sup> Left ventricular end-diastolic and end-systolic volumes were indexed according to body surface. Two experienced readers, blinded to the clinical history, physical examination, laboratory data, and outcome variables, interpreted all echocardiograms and verified left ventricular volumetric analyses.

### Statistical analysis

Data are presented as mean  $\pm$  standard deviation. A preliminary analysis was performed to detect outliers and decide on the most specific measure to describe the data. Because PINP and PIIINP values were not normally distributed, the data were logarithmic (ln) transformed prior to statistical analysis. Patients were grouped according to percentage of LVEF improvement (0%–10% and > 10%). Baseline measurements of left ventricular end-diastolic volume index and left ventricular end-systolic volume index were grouped according to quartiles of ventricular dilation. The treatment effects with sacubitril/valsartan were analyzed within the baseline percentages and quartiles. Change from baseline values of PINP and PIIINP at 12 months were based on least-squares mean values by analysis of covariance (ANCOVA). In all cases, a *P* value < .05 was considered with statistical significance. Data were analyzed with SPSS software, version 14.0 (Statistical Package for Social Sciences, SPSS Inc., United States).

## Results

Baseline characteristics of the population are detailed in [Table 1](#). Of the 401 patients included in the present study, 192 had idiopathic dilated cardiomyopathy, and 209 had ischemic cardiomyopathy. The mean age (standard deviation) was 61  $\pm$  12 years, being significantly higher in the ischemic cardiomyopathy group (67  $\pm$  14 vs 55  $\pm$  10; *P* < .001). Gender, LVEF and HF duration were similar in both groups. At enrollment, nearly all had New York Heart Association Class II (*n* = 94; 23%) or III (*n* = 297; 74%) symptoms. Diabetes and hypertension were more frequent in the ischemic group (*P* < .001). In the whole population, the median baseline levels were 40  $\mu$ g/L for PINP and 6.2  $\mu$ g/L for PIIINP, being significantly higher in ischemic cardiomyopathy compared with dilated cardiomyopathy (PINP 50  $\pm$  25 vs 35  $\pm$  22, *P* = .04; PIIINP 6.5  $\pm$  2.8 vs 5.2  $\pm$  1.8, *P* < .016). The ischemic cardiomyopathy group had worse left ventricular volumes (*P* < .05). There were no significant differences in previous pharmacological treatment and devices use ([Table 2](#)). The target dose of sacubitril/valsartan was achieved in 84 percent of the patients.

### Baseline to 12-month changes

We analyzed changes in markers in subgroups with low (below-median) and high (above-median) levels in the whole population. When PINP and PIIINP baseline levels were below median, they did not change over 12 months with sacubitril/valsartan therapy (*n* = 319), but when PINP and PIIINP

**Table 1 – Baseline characteristics.**

Variable	Dilated cardiomyopathy(n = 192)	Ischemic cardiomyopathy(n = 209)	P
Age (y)	55 ± 10	67 ± 14	<.001
Male/female	144/48	157/52	NS
Blood pressure (mmHg)	110 ± 19	112 ± 17	NS
Heart rate (bpm)	70 ± 10	72 ± 13	NS
Hypertension	50 (25%)	125 (60%)	<.01
Diabetes mellitus	38 (20%)	104 (50%)	<.001
NYHA			NS
II	38 (20%)	56 (27%)	
III	148 (77%)	149 (71%)	
IV	6 (3%)	4 (2%)	
HF duration (months)	16 ± 4	18 ± 2	NS
LVEF (%)	29 ± 10	30 ± 9	NS
LVEDVI (mL/m <sup>2</sup> )	103 ± 34	125 ± 53	<.05
LVESVI (mL/m <sup>2</sup> )	70 ± 28	84 ± 43	<.05
PINP (μg/L)	35 ± 22	50 ± 25	.04
PIIINP (μg/L)	5.2 ± 1.8	6.5 ± 2.8	.016

HR, heart failure; LVEDVI, left ventricular end-diastolic volume index; LVEF, left ventricle ejection fraction; LVESVI, left ventricular end-systolic volume index; NYHA, New York Heart Association functional class; PINP, procollagen type I N-terminal propeptide; PIIINP, procollagen type III N-terminal propeptide. Data are expressed as mean ± standard deviation or percentage.

**Table 2 – Pharmacological treatment and use of devices at enrollment.**

Treatment (%)	All patients(n = 401)	Dilated cardiomyopathy(n = 192)	Ischemic cardiomyopathy(n = 209)	P
Beta-blockers	90	88	92	NS
ACEi	85	84	86	NS
ARBs	14	13	15	NS
MRAs	45	47	43	NS
Diuretics	80	84	76	NS
CRT-P/D	20	22	18	NS

ACEi, angiotensin-converting enzyme inhibitors; ARBs, angiotensin receptor blockers; MRA, mineralocorticoid receptor antagonists; CRT-P/D, cardiac resynchronization therapy pacemaker or defibrillator.

**Table 3 – Serum levels of cardiac extracellular matrix markers at baseline and at 12-month follow-up.**

Biomarkers	Baselinen	Mean ± SD	P	12-monthMean ± SD	ChangeAbsolute difference	(Baseline vs 12-month)95%CI, P
<b>PINP (μg/L)</b>						
Above-median	82	60 ± 22	.001	24 ± 10	-36	(78-93), P < .001
Below-median	319	25 ± 14		27 ± 18	2	(92-1.02), P = NS
<b>PIIINP (μg/L)</b>						
Above-median	82	7.5 ± 0.3	.001	4.5 ± 0.3	-3.0	(73-91), P < .001
Below-median	319	4.9 ± 0.3		5.0 ± 0.5	0.11	(92-98), P = NS

PINP: procollagen type I N-terminal propeptide; PIIINP: procollagen type III N-terminal propeptide.

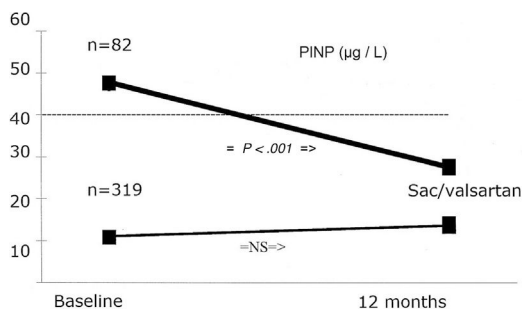
Data are expressed as mean ± standard deviation (SD) according to above-median or below-median baseline levels (in micrograms per liter).

P-value: ANCOVA adjusted by baseline values.

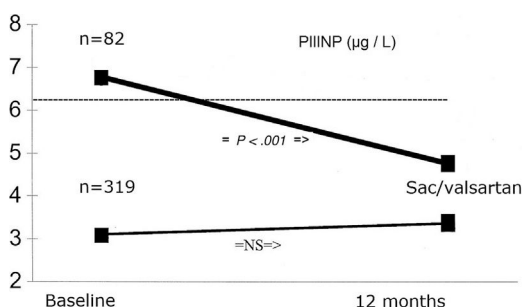
baseline levels were above median, they decreased significantly at 12 months in 82 patients, 63 with ischemic cardiomyopathy and 19 with idiopathic dilated cardiomyopathy, of which 52(63%) with age 70 years or older, observing an absolute difference of  $-36 \mu\text{g/L}$  for PINP (from  $60 \pm 22$  to  $24 \pm 10$ ; 95%CI, 78-93;  $P < .001$ ), and  $-3.0 \mu\text{g/L}$  for PIIINP (from  $7.5 \pm 0.3$  to  $4.5 \pm 0.3$ ; 95%CI, 73-91;  $P < .001$ ) (Table 3, Figs. 1 and 2). A significant improvement in LVEF was observed in this subgroup with an absolute increase  $> 10\%$ . Baseline LVEF doubled on average, from 24% to 48% ( $P < .001$ ), and the mean LVEF for that cohort increased from 29% at baseline to

36% (+7%) at 12 months ( $P < .001$ ) (Figs. 3 and 4). The increase in LVEF in this subgroup of patients was correlated with decrease in left ventricle volumes. The absolute magnitude of change in left ventricle end-diastolic and end-systolic volumes was greatest in the quartile 4 (left ventricular end-diastolic volume index  $> 120 \text{ mL/m}^2$  and left ventricular end-systolic volume index  $> 50 \text{ mL/m}^2$ ), with a significant reduction in left ventricular end-diastolic volume index ( $-20 \text{ mL/m}^2$ ) and left ventricular end-systolic volume index ( $-18 \text{ mL/m}^2$ ) over 12 months ( $P < .001$ ). Nonetheless, in each quartile, the magnitude of left ventricle volumes decreased (Fig. 5). These findings

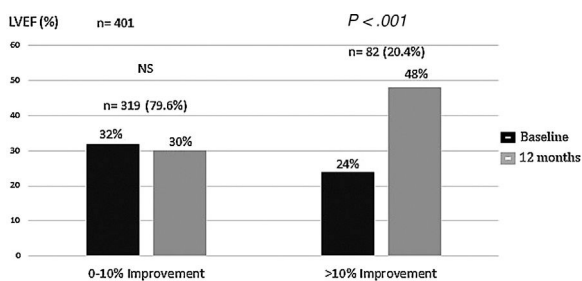




**Fig. 1 – Changes of serum levels of procollagen type I N-terminal propeptide from baseline to 12 months according to above-median or below-median baseline levels (in micrograms per liter). PINP, procollagen type I N-terminal propeptide; Sac, sacubitril.**



**Fig. 2 – Changes of serum levels of procollagen type III N-terminal propeptide from baseline to 12 months according to above-median or below-median baseline levels (in micrograms per liter). PIIINP, procollagen type III N-terminal propeptide; Sac, sacubitril.**

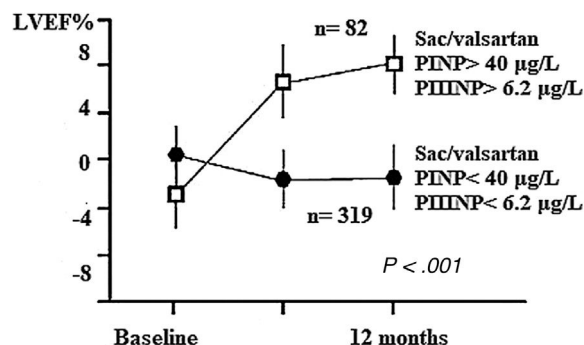


**Fig. 3 – Left ventricular ejection fraction (LVEF) at baseline and 12 months according to LVEF improvement.**

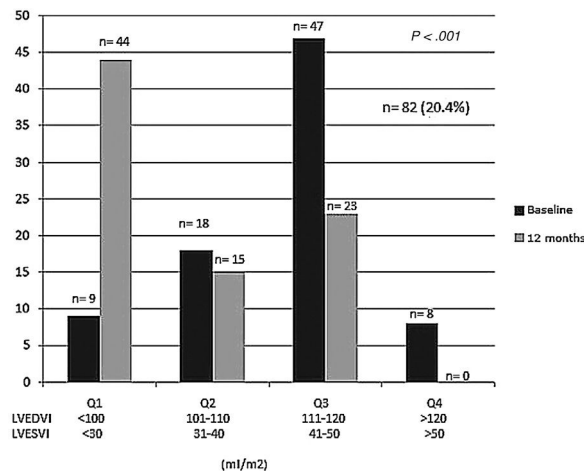
suggest that changes in fibrosis markers induced by sacubitril/valsartan therapy are related to reverse cardiac remodeling in those patients with higher PINP and PIIINP levels, advanced age, ischemic etiology, comorbid medical conditions (diabetes, hypertension) and severe dilation of left ventricle.

## Discussion

Cardiac remodeling is initially an adaptive response in heart failure, but it gradually becomes maladaptive, leading to fibrosis and disease progression.<sup>25</sup> Multiple biomarkers of cardiac fibrosis have been investigated in the last 2 decades, of which very few have been of clinical utility. In this sense, for a cir-



**Fig. 4 – Changes in left ventricular ejection fraction (LVEF) from baseline during the 12-month period of observation. The sacubitril/valsartan effect on LVEF was significant only in patients with above-median baseline levels (PINP > 40 µg/L, PIIINP > 6.2 µg/L). The overall mean LVEF increased from 29% at baseline to 36% (+7%) at 12 months (P < .001). PINP, procollagen type I N-terminal propeptide; PIIINP, procollagen type III N-terminal propeptide; Sac, sacubitril.**



**Fig. 5 – Changes in left ventricular end-diastolic and end-systolic volumes index from baseline during the 12-month period of observation according to quartiles Q1–Q4, defined by increasing severity of ventricular dilation from mild to severe. Reversal of left ventricular dilation is observed with sacubitril/valsartan therapy (P < .001). LVEDVI, left ventricular end-diastolic volume index; LVESVI, Left ventricular end-systolic volume index.**

culating molecule to be considered a biochemical marker of myocardial remodeling, it must meet several criteria. First, there must be a relationship between its expression in the myocardium and its concentration in blood; second, there must be an association of its concentration in blood with the structural and/or functional cardiac parameters that reflect the characteristics of the myocardial change that is being studied and, finally, its levels must vary in parallel with the changes in the parameters previously mentioned, induced by pharmacological treatment.<sup>23</sup> Measurement of ECM turnover using markers such as PINP and PIIINP is a useful tool for monitoring cardiac tissue repair. In the Randomized Aldactone Evalua-

tion (RALES) study, 1663 patients with severe symptoms of HF and LVEF < 35% were assigned to receive spironolactone or placebo. There was a 30% reduction in mortality in the spironolactone group (HR, 0.70; 95%CI, 0.60–0.82;  $P < .001$ ). A subanalysis evaluated samples from 261 patients to determine their fibrotic status through the measurement at baseline serum levels of PINP and PIIINP and at 6-month follow-up. At 6 months these markers decreased in the spironolactone group but remained unchanged in the placebo group. The benefits in terms of morbidity and mortality associated with the use of spironolactone were greater in those patients with higher levels of these markers.<sup>24,25</sup> In the analysis of the PARADIGM-HF study, at baseline PINP and PIIINP were higher than published referent control values. A subanalysis evaluated samples from 1776 patients with HFrEF measuring the basal serum levels of PINP and PIIINP and at 8-month follow-up. At 8 months, these markers decreased significantly in the sacubitril/valsartan group compared to the enalapril group, and exerted a beneficial outcome related to changes in these biomarkers.<sup>15</sup> These findings are interesting because it is derived from them that there is a subgroup of potential “super-responders”, represented by patients with higher markers of collagen synthesis. In this context, we studied the relationship between changes in precursors of collagen synthesis (PINP and PIIINP) and changes in parameters for reverse remodeling (LVEF, left ventricular end-diastolic volume index and left ventricular end-systolic volume index) from baseline to 12-month follow-up, in patients con HFrEF of ischemic and dilated etiology treated with sacubitril/valsartan.

In our results, REMODELING HF (Reduction of Extracellular Matrix Markers and Reverse Cardiac Remodeling During Sacubitril/Valsartan Therapy for Heart Failure), only patients with higher serum levels of PINP and PIIINP had a significant decrease in these collagen synthesis markers with sacubitril/valsartan, and this decrease was correlated with reverse cardiac remodeling that showed an absolute increase in LVEF > 10% and relative percent left ventricle end-diastolic volume reduction > 10%, especially in older patients, ischemic cardiomyopathy, comorbid medical conditions (diabetes, hypertension), and greater dilation of the left ventricle. These findings demonstrate that the sacubitril/valsartan effects on outcomes in patients with HF are not exclusively related to angiotensin receptor antagonism and neprilysin inhibition, but rather that it has a direct effect on the ECM turnover, decreasing significantly the precursors of collagen synthesis in patients with HFrEF and an active fibrotic process.

These results could be important for clinicians and patients, because quantifying the levels of fibrosis markers in a non-invasive way accompanied by a biomarker-guided treatment may be an opportunity to decrease cardiac remodeling in patients with HFrEF with the use of antagonism and neprilysin inhibition, thus becoming a novel, non-expensive and easy to use and to implant method at medical centers and hospitals.

### Limitations

The main limitation of the present study is related to the absence of a control group; since sacubitril/valsartan has a class I clinical practice recommendation for HFrEF, which made a comparison group unethical. However, we believe that

changes in fibrosis markers and its association with reverse cardiac remodeling are consistent with the time of treatment with sacubitril/valsartan.

## Conclusions

For the first time, we observe that changes in fibrosis markers induced by sacubitril/valsartan therapy in HFrEF are related to reverse cardiac remodeling in patients with higher PINP and PIIINP levels, advanced age, ischemic etiology, comorbid medical conditions, and severe left ventricle dilation. These findings suggest that there may be an opportunity to decrease adverse remodeling with the use of angiotensin receptor-neprilysin inhibitor, as a biomarker-guided therapeutic approach aimed at decreasing fibrogenic activity and modulate the remodeling process.

### What is known about the subject?

Extracellular matrix turnover has been recognized an important mediator of cardiac fibrosis and ventricular remodeling in heart failure, usually associated with an increase in the synthesis of types I and III collagen fibers. However, there are no studies that have specifically evaluated the impact of reduced collagen synthesis on reverse cardiac remodeling. Only with a better understanding of this process we will be able to develop new therapeutic approaches.

### Does it contribute anything new?

Sacubitril/valsartan effect on the outcomes in patients with heart failure is not exclusively related to angiotensin receptor antagonism and neprilysin inhibition, but rather in the fact that it has a direct effect on the extracellular matrix turnover, decreasing significantly the precursors of collagen synthesis in patients with heart failure with reduced ejection fraction and an active fibrotic process.

### Funding

This investigation has not received specific aid from public sector agencies, the commercial sector or non-profit entities.

### Conflicts of interest

None.

### Acknowledgments

We thank to the multidisciplinary team of Heart Failure Unit of DIME Clínica Neurocardiovascular for their decisive and valuable contribution in the realization of this project.

## REFERENCES

1. Cohn JN, Ferrari R, Sharpe N. Cardiac remodeling-concepts and clinical implications: a consensus paper from an international forum on cardiac remodeling. *J Am Coll Cardiol.* 2000;35:569–582.
2. Klappacher G, Franzen P, Haab D, et al. Measuring extracellular matrix turnover in the serum of patients with idiopathic or ischemic dilated cardiomyopathy and impact on diagnosis and prognosis. *Am J Cardiol.* 1995;75:913–918.
3. Burchfield JS, Xie M, Hill JA. Pathological ventricular remodeling: mechanisms. *Circulation.* 2013;128:388–400.
4. Dostal DE. The cardiac renin-angiotensin system: novel signaling mechanisms related to cardiac growth and function. *Regul Pept.* 2000;91:1–11.
5. Fortuno MA, Lopez N, Gonzalez A, Díez J. Involvement of cardiomyocyte survival-apoptosis balance in hypertensive cardiac remodeling. *Expert Rev Cardiovasc Ther.* 2003;1:293–307.
6. Seneri GG, Boddi M, Cecioni I, et al. Cardiac angiotensin II formation in the clinical course of heart failure and its relationship with left ventricular function. *Circ Res.* 2001;88:961–968.
7. Katz AM. Heart failure: a hemodynamic disorder complicated by maladaptive proliferative responses. *J Cell Mol Med.* 2003;7:1–10.
8. Pauschinger M, Knopf D, Petschauer S, et al. Dilated cardiomyopathy is associated with significant changes in collagen type I/III ratio. *Circulation.* 1999;99:2750–2756.
9. Querejeta R, Varo N, López B, Larman M, et al. Serum N-terminal propeptide of procollagen type I is a marker of myocardial fibrosis in hypertensive heart disease. *Circulation.* 2000;101:1729–1735.
10. Cicoira M, Rossi A, Bonapace S, et al. Independent and additional prognostic value of aminoterminal propeptide of type III procollagen circulating levels in patients with chronic heart failure. *J Card Fail.* 2004;10:403–411.
11. Lupón J, Gaggin HK, de Antonio M, et al. Biomarker-assist score for reverse remodeling prediction in heart failure: the ST2-R2 score. *Int J Cardiol.* 2015;184:337–343.
12. Plata CA, Vivas M, Puerta A. Prognostic value of N-terminal propeptide of type I and III procollagen levels associated with ventricular remodeling in patients with Chronic Heart Failure. *Rev Colomb Cardiol.* 2018;25:43–50.
13. Aimo A, Gaggin HK, Barison A, et al. Imaging biomarker, and clinical predictors of cardiac remodeling in heart failure with reduced ejection fraction. *JACC Heart Fail.* 2019;7:782–794.
14. Gaasch WH, Zile MR. Left ventricular structural remodeling in health and disease: with special emphasis on volume, mass, and geometry. *J Am Coll Cardiol.* 2011;58:1733–1740.
15. McMurray J, Packer M, Desai A, et al. Angiotensin-neprilysin inhibition versus enalapril in heart failure. *N Engl J Med.* 2014;371:993–1004.
16. Januzzi J, Prescott M, Butler J, et al. Association of change in N-terminal Pro-B-type natriuretic peptide following initiation of sacubitril-valsartan treatment with cardiac structure function in patients with heart failure with reduced ejection fraction. *JAMA.* 2019;322:1–11.
17. Felker M, Shaw L, O'Connor C. A standardized definition of ischemic cardiomyopathy for use in clinical research. *JACC.* 2002;39:210–218.
18. Richardson P, McKenna W, Bristow M, et al. Report of the 1995 WHO/International Society and Federation of Cardiology Task Force on the definition and classification of cardiomyopathies. *Circulation.* 1996;93:841–842.
19. Masci PG, Schuurman R, Andrea B, et al. Myocardial fibrosis as a key determinant of left ventricular remodeling in idiopathic dilated cardiomyopathy: a contrast-enhanced cardiovascular magnetic study. *Circ Cardiovasc Imaging.* 2013;6:790–799.
20. Ponikowski P, Voors AA, Anker SD, et al. 2016 ESC guidelines for the diagnosis and treatment of acute and chronic heart failure: the task force for the diagnosis and treatment of acute and chronic heart failure of the European Society of Cardiology (ESC) developed with the special contribution of the Heart Failure Association (HFA) of the ESC. *Eur Heart J.* 2016;37:2129–2200.
21. Lopez B, Gonzalez A, Ravassa S, et al. Circulating biomarkers of myocardial fibrosis: the need for a reappraisal. *J Am Coll Cardiol.* 2015;65:2449–2456.
22. Lang RM, Badano LP, Mor-Avi V, et al. Recommendations for cardiac chamber quantification by echocardiography in adults: an update from the American society of echocardiography and the European association of cardiovascular imaging. *Eur Heart J Cardiovasc Imaging.* 2015;16:233–270.
23. Wong M, Staszewsky L, Latini R, et al. Severity of left ventricular remodeling defines outcomes and response to therapy in heart failure: valsartan heart failure trial (Val-HeFT) echocardiographic data. *J Am Coll Cardiol.* 2004;43:2022–2027.
24. Zannad F, Alla F, Dousset B, Perez A, Pitt B. Limitation of excessive extracellular matrix turnover may contribute to survival benefit of spironolactone therapy in patients with congestive heart failure: insights from the randomized aldactone evaluation study (RALES). Rales investigators. *Circulation.* 2000;102:2700–2706.
25. Weber KT, Sun Y, Bhattacharya SK, Ahokas RA, Gerling IC. Myofibroblast-mediated mechanisms of pathological remodeling of the heart. *Nat Rev Cardiol.* 2013;10:15–26.